

# Seamless Integration: Enhancing Digital Care Pathways Through Effective Interoperability

## Keeping patients safe through interoperability

With Digital Care Pathways (DCP), interoperability is crucial for keeping patients safe. Interoperability provides:

- Comprehensive information access
- Integrated coordination of care
- Timely and accurate patient assessments and information
- Empowered patients

Interoperability prevents patient information being siloed and enables clinicians to review results in the systems they already use, thus reducing clinician burden.

The newly developed DCPs established across Northern Health were aligned with the existing health systems ICT architecture. This was achieved through the development and implementation of the CLEO Technical Integration Solution in collaboration with the Northern Health ICT Team.

## Northern Health Integration Networks

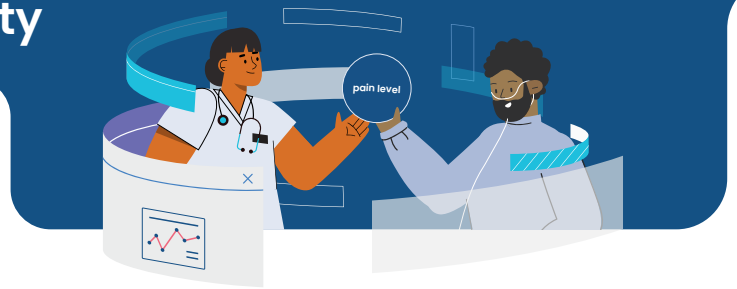
Referring to Figure 1 there are three distinct integrated digital networks involved in the Northern Health core integration architecture. These networks aim to manage the efficient and accurate delivery of health information between clinical systems in the hospital. These include:

### 1. Victorian Department of Health apps and service

The Northern Health patient administration system – iPM is housed within the Victorian Department of Health

### 2. Melbourne Health

Manages the external firewall (security) and the Microsoft exchange server on behalf of Northern Health and facilitates communication between Northern Health and the Victorian Department of Health apps and services and external third-party applications of which Datas Health is one.



### 3. Northern Health

Rhapsody Integration Engine resides in the Northern Health ICT infrastructure to facilitate the movement of patient information between systems such as iPM, pathology and EMR.

The CLEO solution relies on Rhapsody to get patient information from iPM, to deliver reports from Datas Health to CPF and deliver data to the data warehouse.

## The CLEO technical integration solution

- DCPs developed within CLEO are built and developed through Datas Health, a web server which hosts an application for clinicians to interact and monitor their patients.
- Patients interact with Datas Health through the My Health @ Northern app, hosted on the Datas Health web server. The web server also hosts the app to ingest data generation from the remote monitoring devices.
- Datas Health has a front and back-end interface. The front-end is clinician facing, whereas the back-end (referred to as “Middleware” in Figure 1), hosts the data storage and functional capabilities of its web application. Through its own integration engine Datas Health is able to obtain patient data from the middleware and send this data directly to Northern Health.
- Datas Health also integrates directly with the Patient Activation Measure (PAM) IP scoring system to ensure scoring data from PAM is directly monitored through Datas Health by our clinicians.

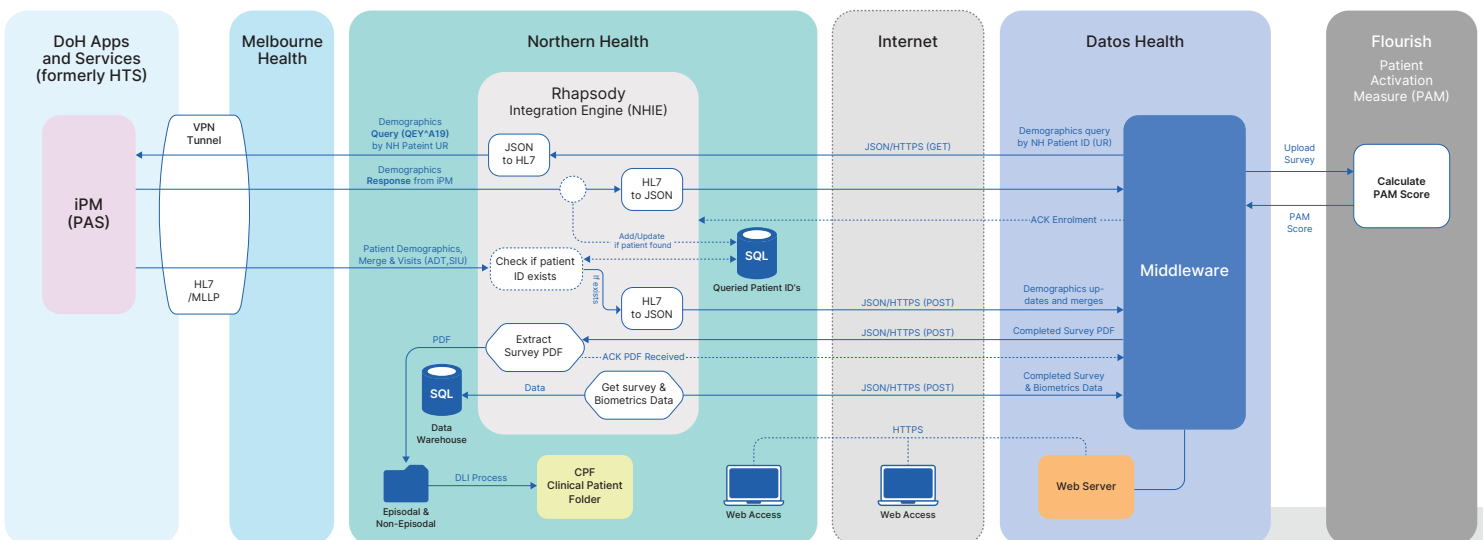


Figure 1: Northern Health Care Pathways Integration